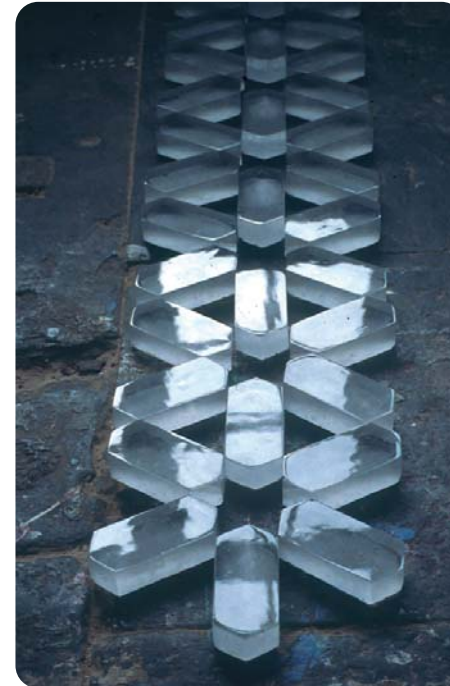
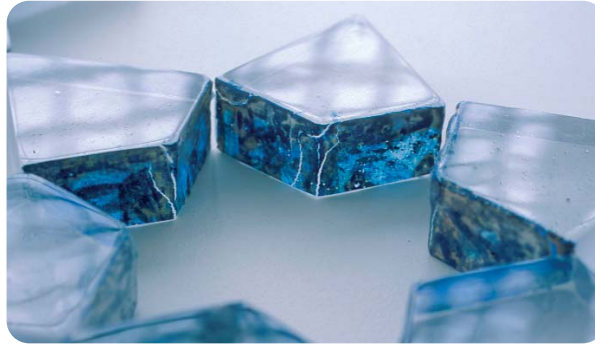


### Installation

Using glass in different ways to create installations allows a dialogue to take place between the work and its surroundings for a short space of time.



**Strange Fruit**

16 cast glass strawberries.

This piece was a collaboration with Lucy Broadhead and was suspended from a tree for an exhibition at Crook Hall in Durham.

Photography by David Williams



*address* Cobalt Studios Limited 14-16 Boyd Street Shieldfield Newcastle upon Tyne NE2 1AP

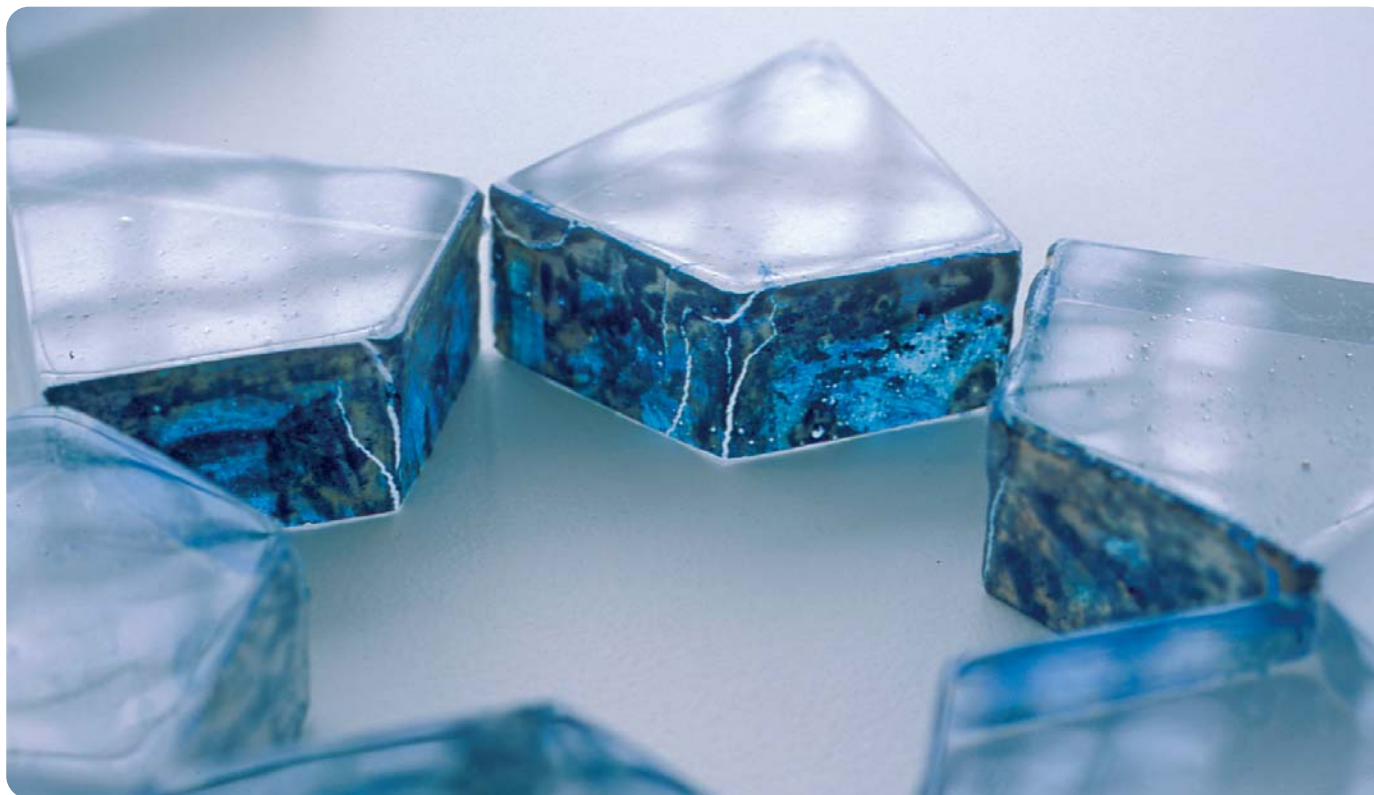
*telephone* 07816 823 695 *email* info@effieburnsglass.co.uk



### **Absent Present I**

cast and polished glass with enamel detail. This piece was part of a body of work that explored the links between geometry, art and religion. It formed part of a show called 'Sacred Geometry' at the Centre Culturel, France. The building also housed an important illuminated manuscript.

Photography by Steve Hines



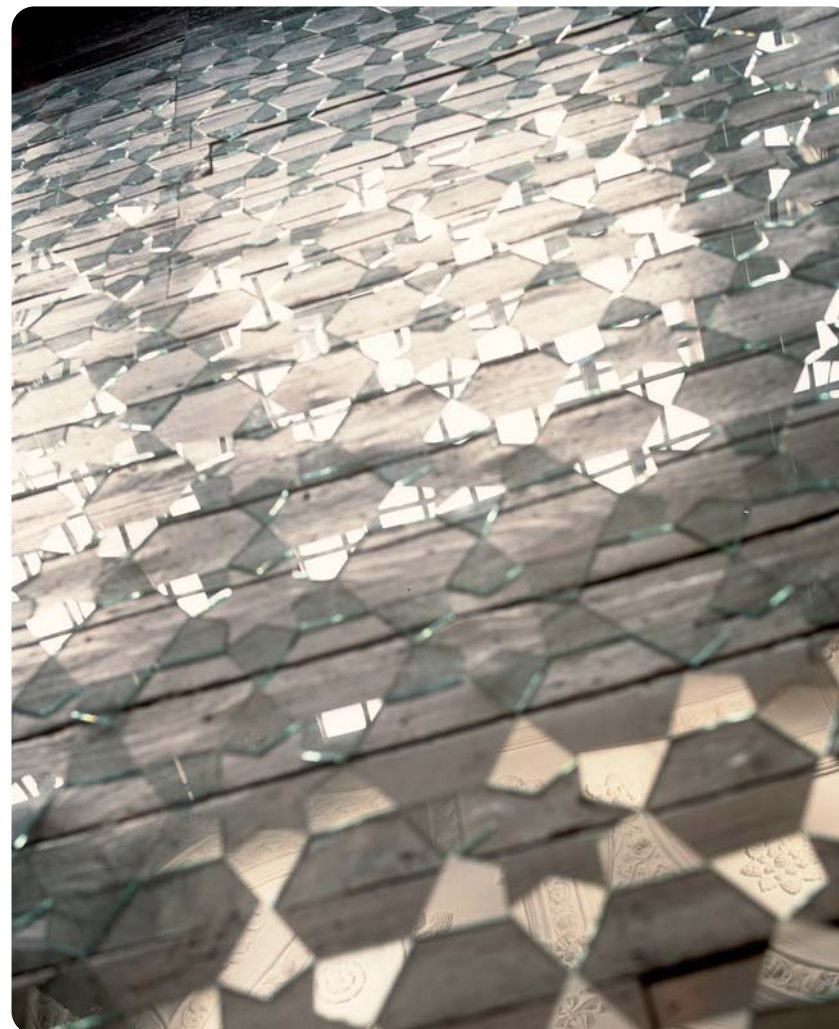
*address* Cobalt Studios Limited 14-16 Boyd Street Shieldfield Newcastle upon Tyne NE2 1AP  
*telephone* 07816 823 695 *email* info@effieburnsglass.co.uk



**Absent Present II**

Two thousand kite shaped pieces of 4mm float glass. This piece was made specifically for a room with a beautiful floor in France. It was part of a group show called 'convergences/divergences' 2003.

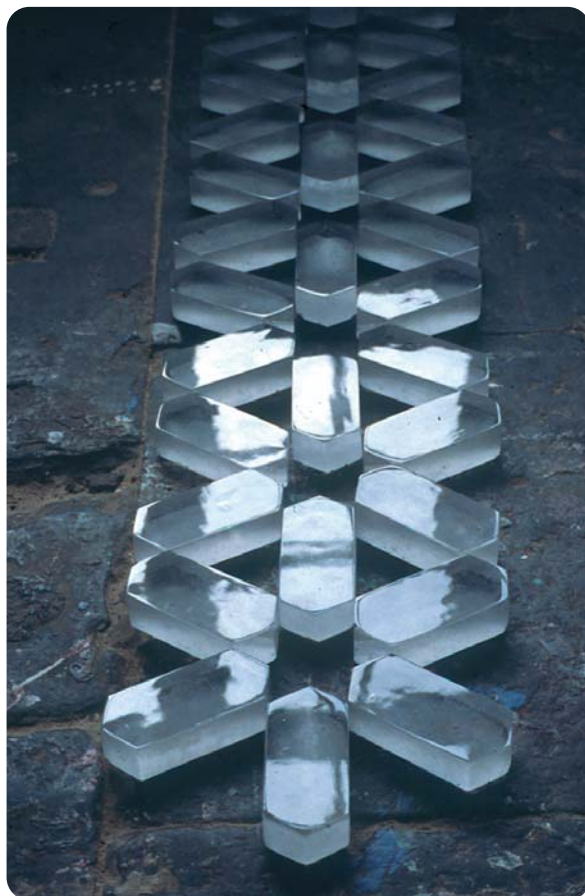
Original photograph taken by John Donoghue at Bessie Surtees House with kind permission from English Heritage.



**Six Stars**

Six Stars, part of a body of work that explores the links between geometry, art and religion.

Part of an exhibition called "Sacred Geometry" 2002, France.



*address* Cobalt Studios Limited 14-16 Boyd Street Shieldfield Newcastle upon Tyne NE2 1AP  
*telephone* 07816 823 695 *email* info@effieburnsglass.co.uk

